

# PRINTHOUSE

SPEC SUITES

2410 POLK OFFICE LOBBY ↑


2410


OFFICE LOBBY

LOVETT  
COMMERCIAL

# SECOND FLOOR

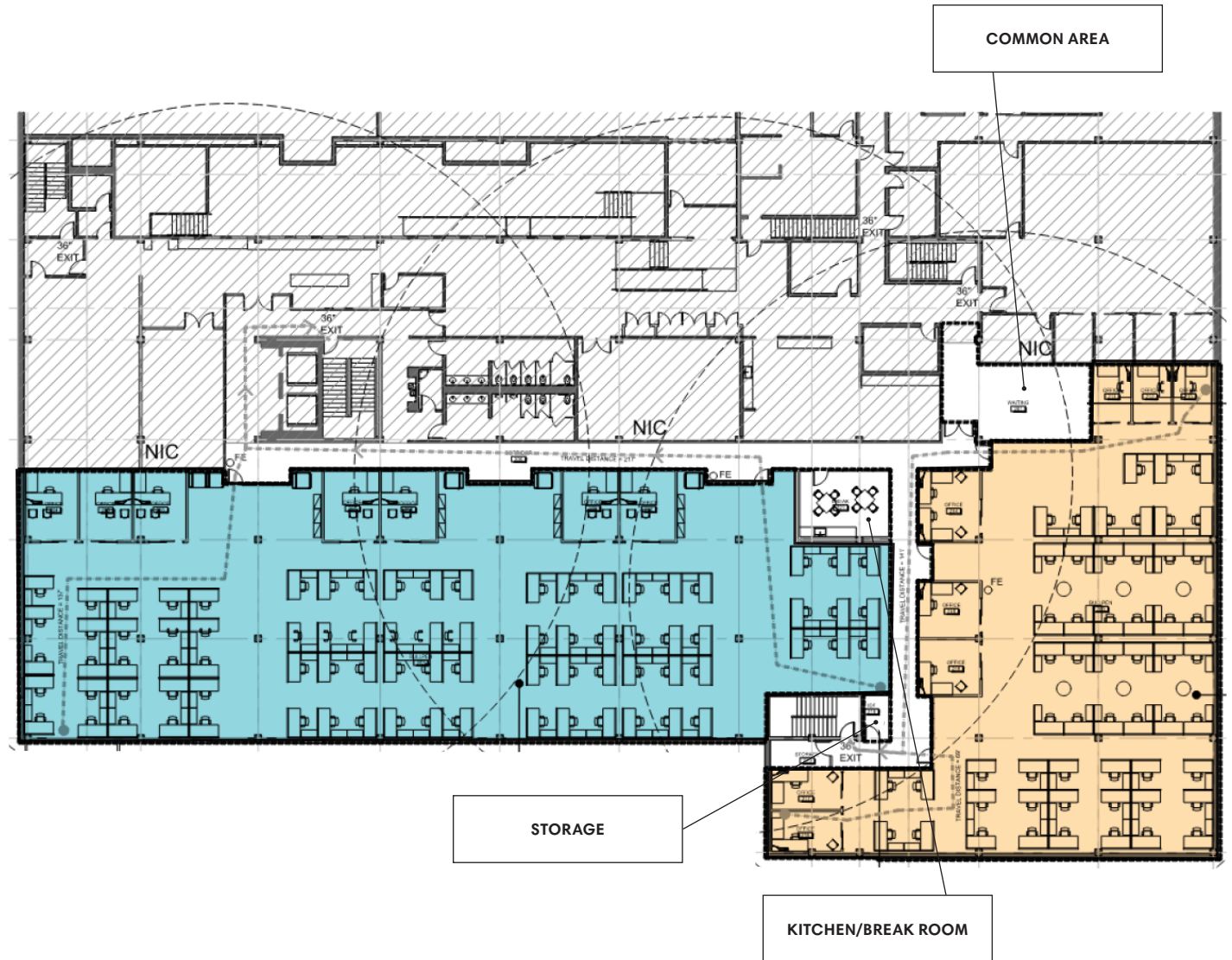
Move-in ready suites

 Suite 201  
65 Occupants  
6,419 SF

 Suite 202  
100 Occupants  
9,732 SF



Suite numbers are for visual reference only and are subject to change.



# THIRD FLOOR

Move-in ready suites

- Suite 301  
 88 Occupants  
 8,476 SF
  
- Suite 302  
 27 Occupants  
 2,623 SF
  
- Suite 303  
 33 Occupants  
 3,297 SF



Suite numbers are for visual reference only and are subject to change.





# PRINTHOUSE

2410 Polk St. | Houston, TX 77003

## CONTACT INFO:

TYLER GARRETT  
Managing Director  
[tyler.garrett@jll.com](mailto:tyler.garrett@jll.com)

JARED ATABUATSI  
Associate  
[jared.atabuatsi@jll.com](mailto:jared.atabuatsi@jll.com)

LOVETT  
COMMERCIAL

